

edilportale[®]

TOUR 2018

Efficienza Energetica, Antisismica,
Comfort Abitativo, NTC2018, Illuminazione,
Acustica, BIM, Realtà Virtuale

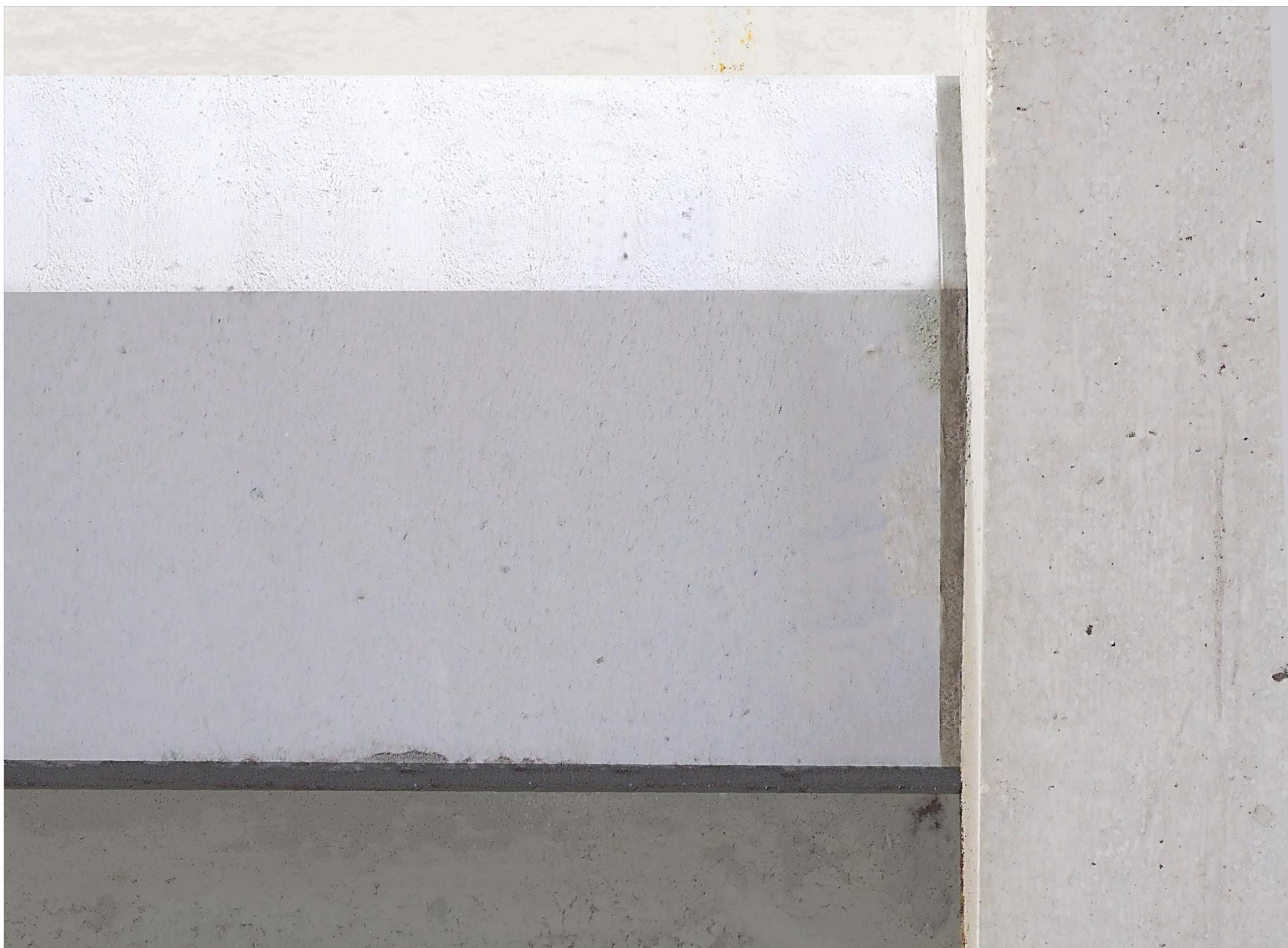
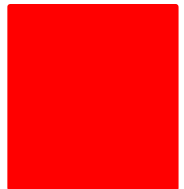


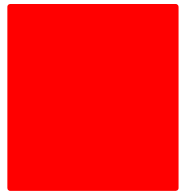
L'AQUILA, 13 APRILE 2018

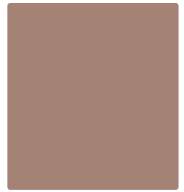
mattONE

Marco Toro











*Facile
esecuzione
delle tracce e
dei cavedii*

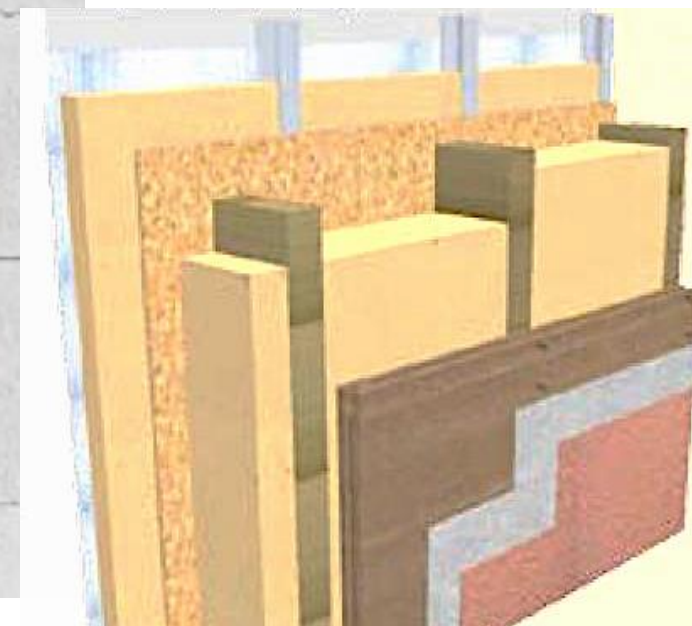
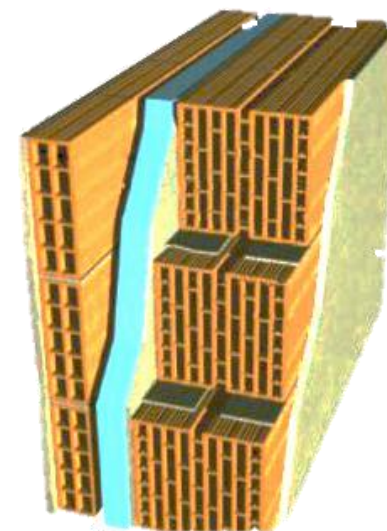




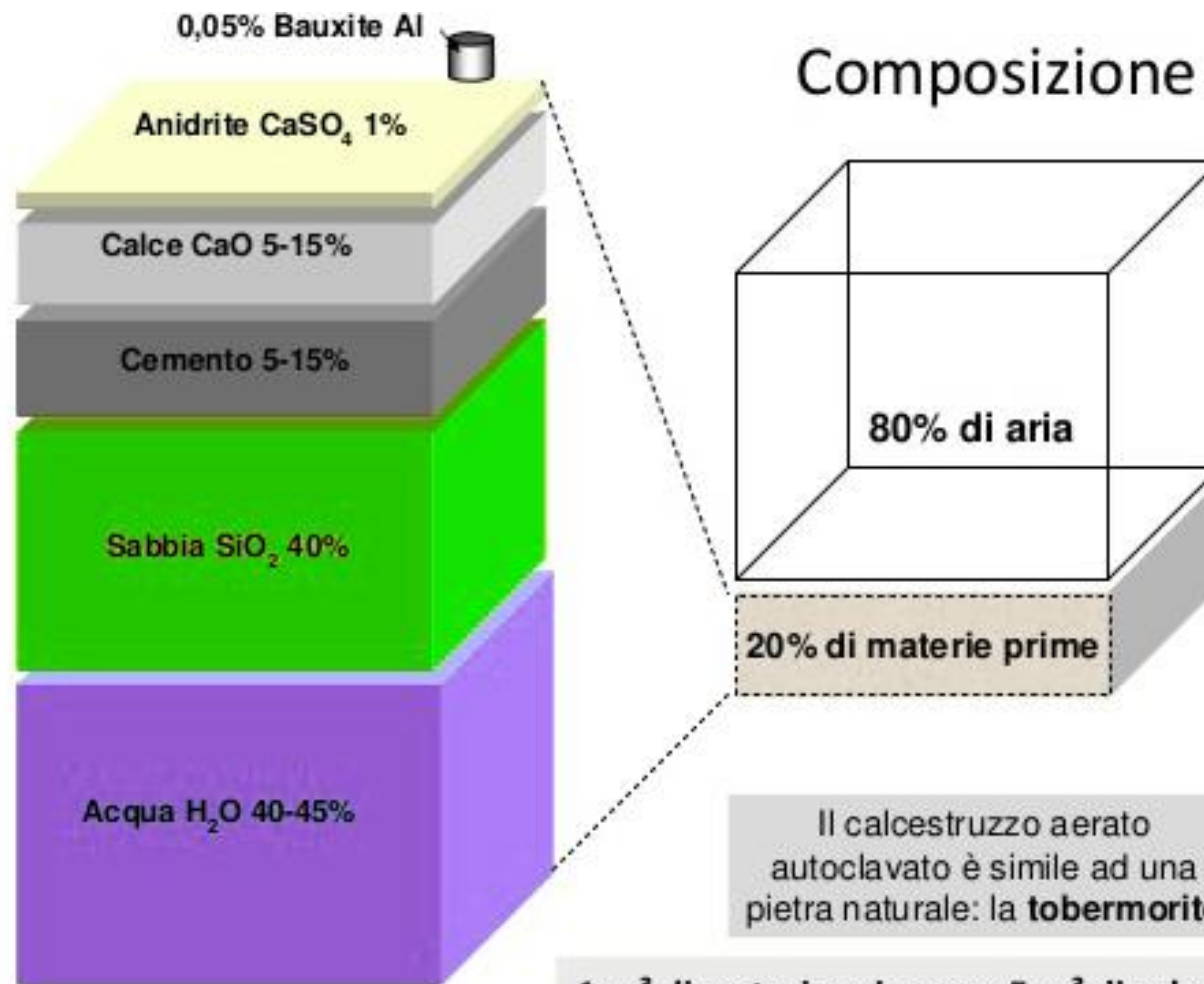




- semplificazione
- garanzia dei risultati
- per tutte le maestranze

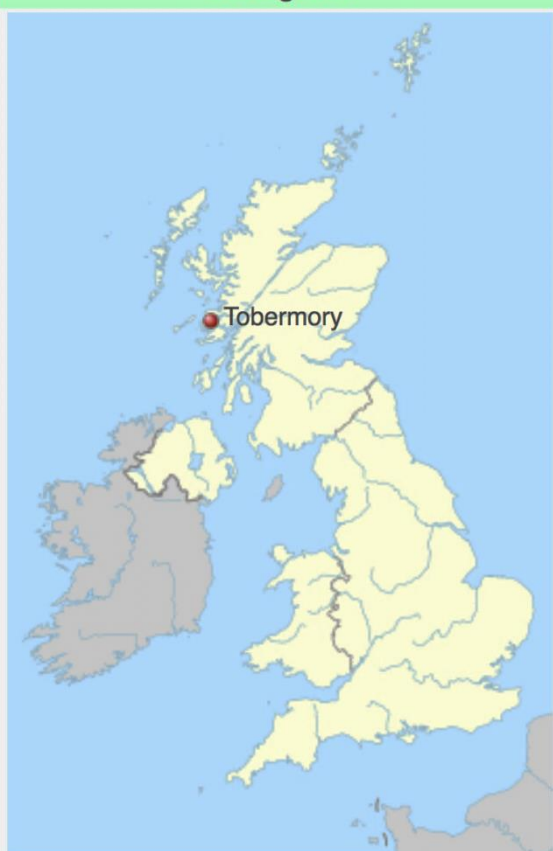


Composizione



1 m³ di materie prime per 5 m³ di calcestruzzo cellulare

Cartografia

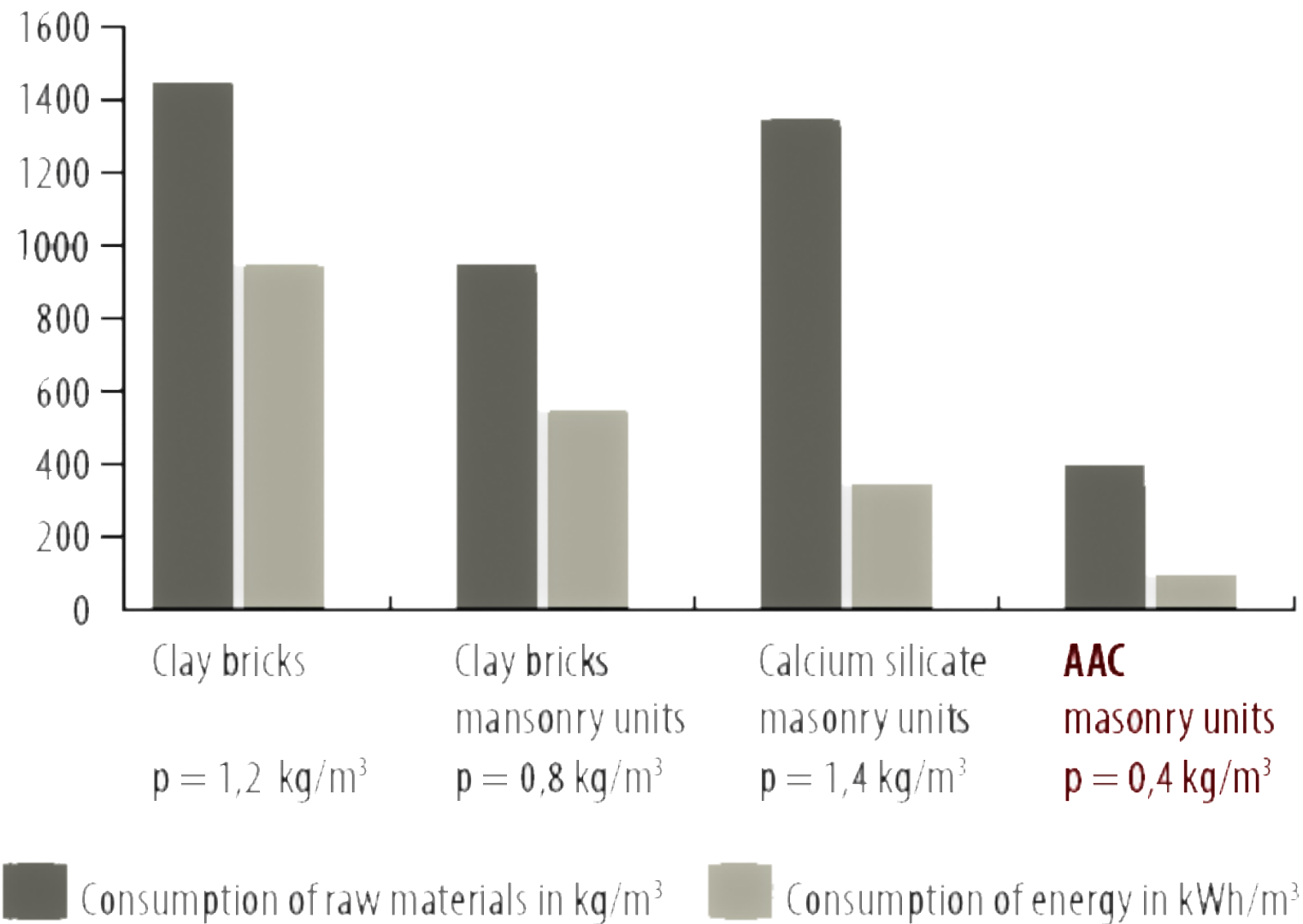


220°C

Calcio Silicio e Acqua



Consumption of raw materials and energy needed for production*



Clay bricks

$\rho = 1,2 \text{ kg/m}^3$

Clay bricks
masonry units

$\rho = 0,8 \text{ kg/m}^3$

Calcium silicate
masonry units

$\rho = 1,4 \text{ kg/m}^3$

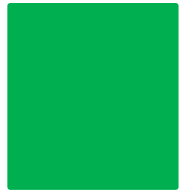
AAC
masonry units

$\rho = 0,4 \text{ kg/m}^3$

*...Il motore del 2000 sarà bello e lucente
Sarà veloce e silenzioso, sarà un motore delicato
Avrà lo scarico calibrato e un odore che non inquina...
Lo potrà respirare un bambino o una bambina...*

(Lucio Dalla)

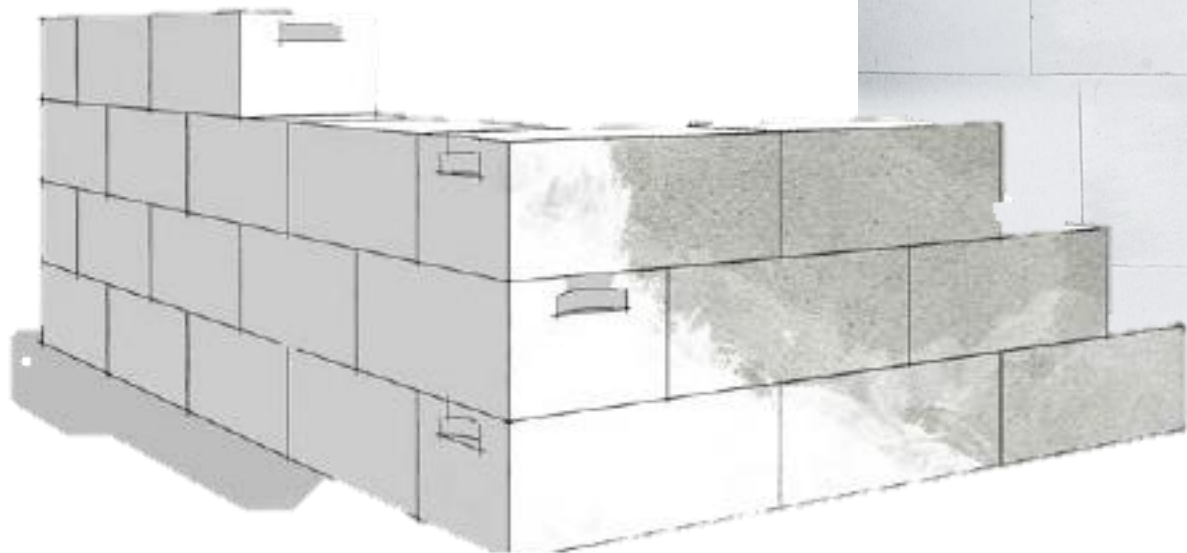


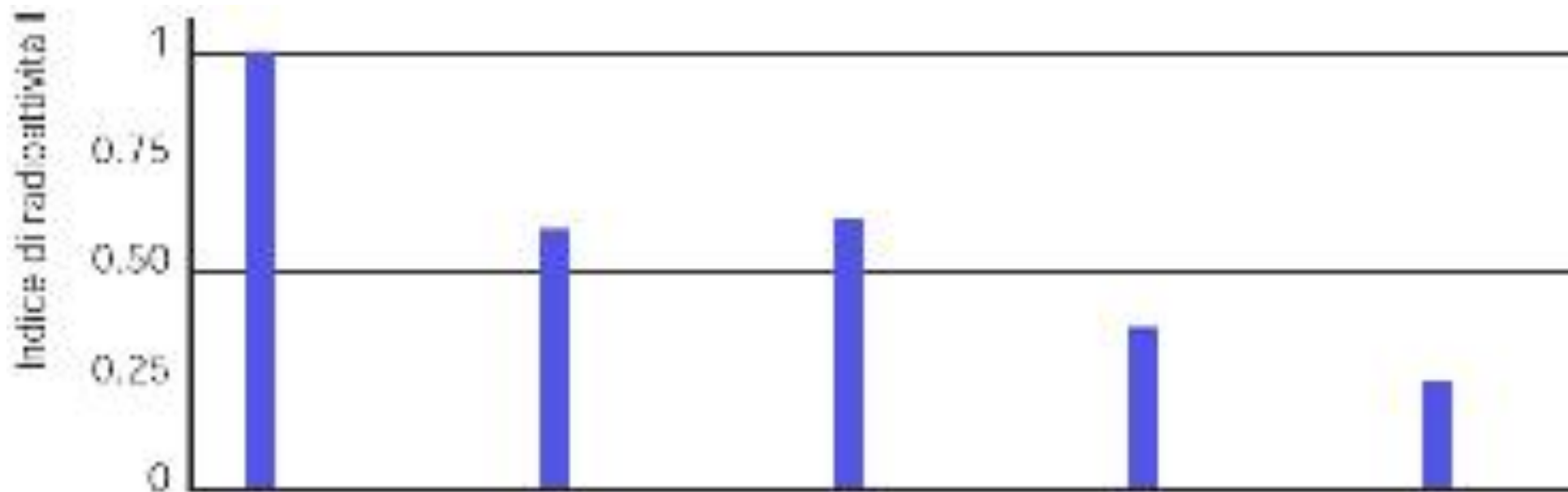












INDICE DI RADIOATTIVITÀ

$$I = 0.24 \div 0.33$$

Figura 5 – Tamponamento con muratura in AAC sp. 30 cm non armata

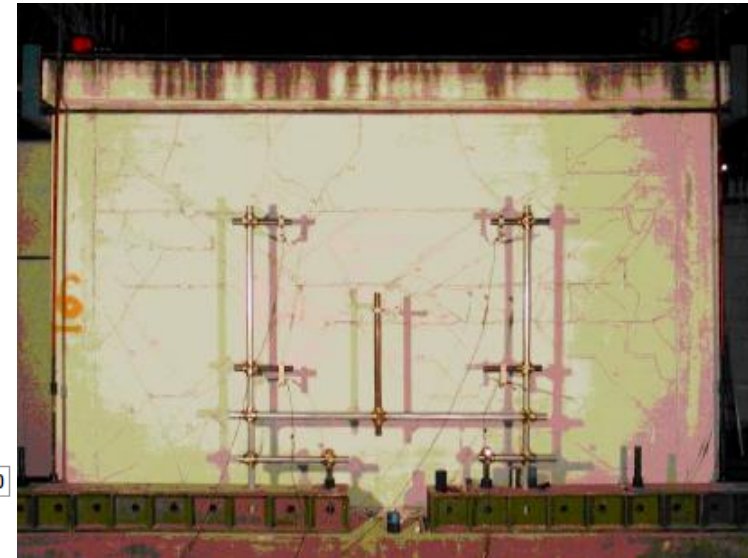
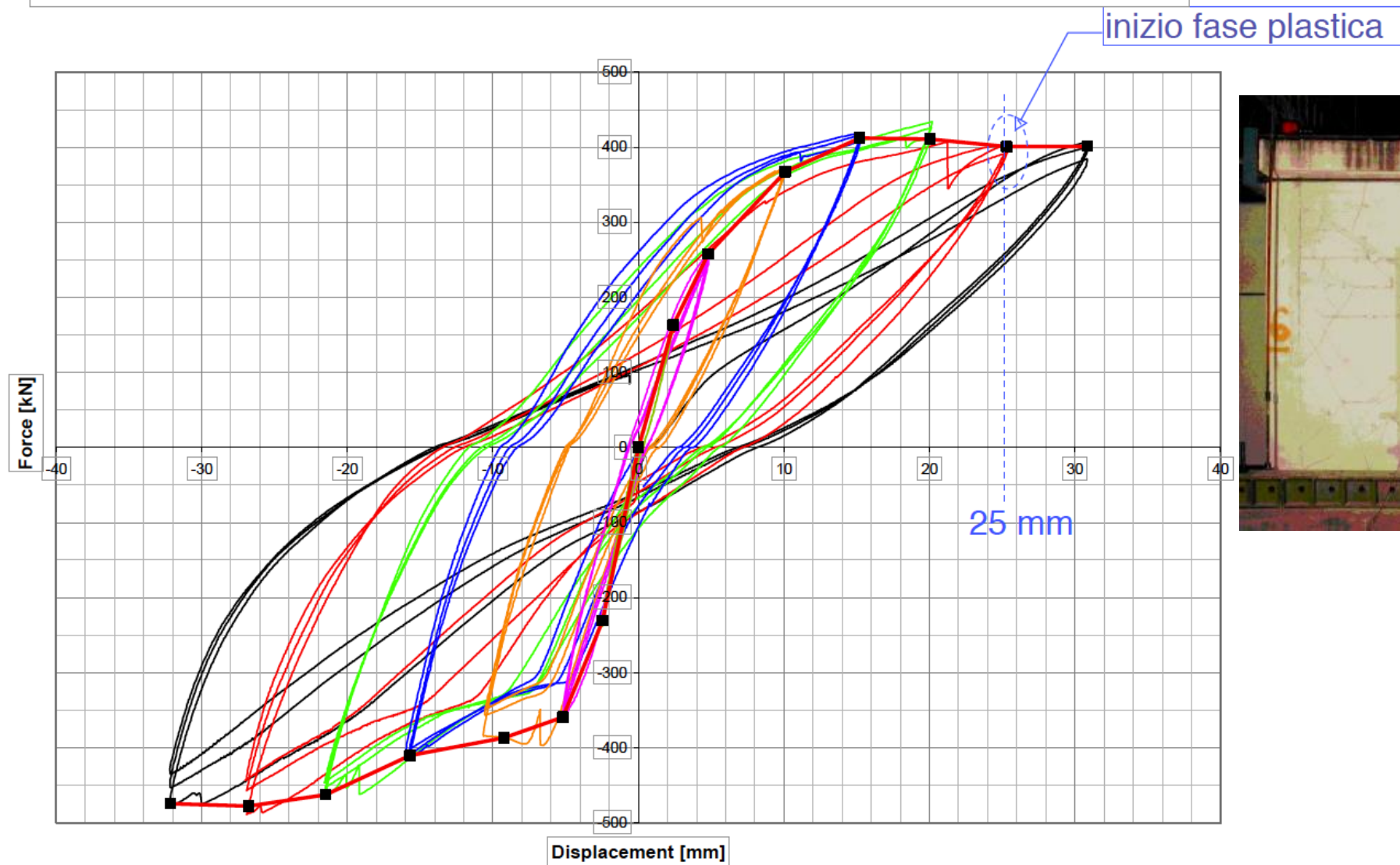


Figura 7 – Tamponamento con armatura ($2\Phi 6/50\text{ cm}$) nelle scanalature dei blocchi

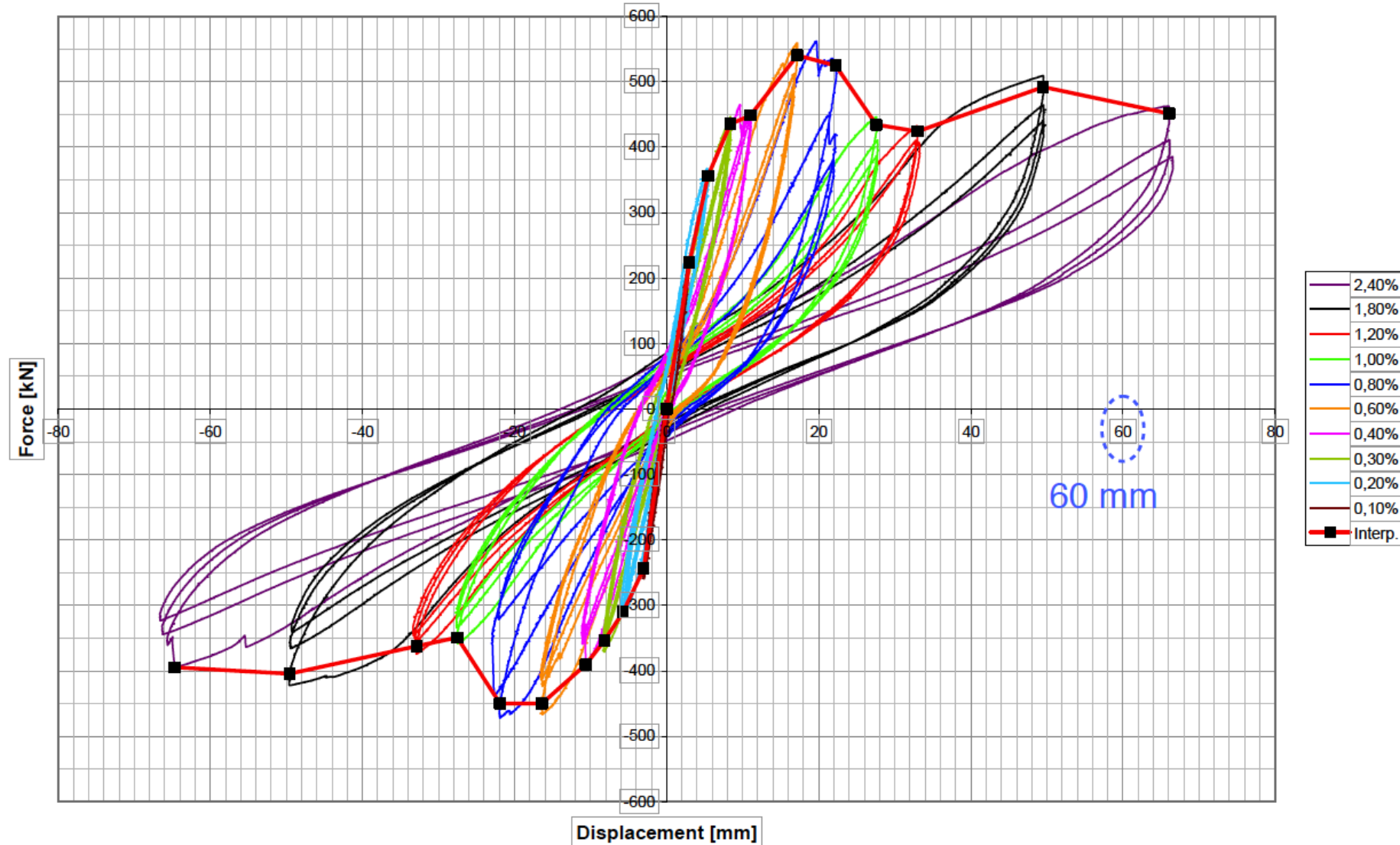
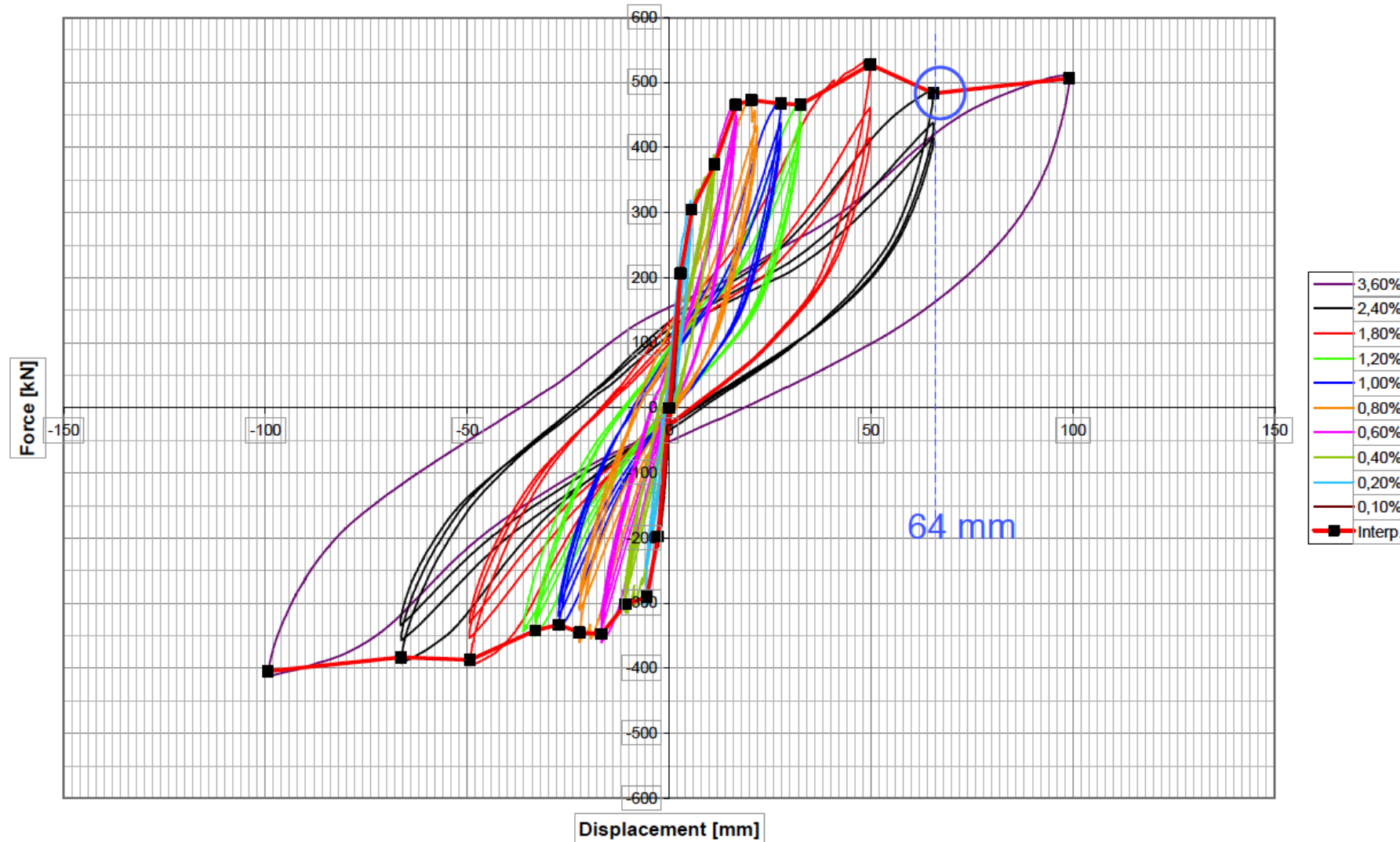
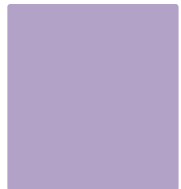


Figura 8 – Tamponamento con armatura (tralicci piatti) nei letti di malta (ogni 50 cm)







ospedale



Hotel Federico II

Edificio Industriale Aterno Vetro

Palazzina f.lli Carratelli - Onna



tour.edilportale.com



edilportale[®]

TOUR 2018

grazie per l'attenzione

tour.edilportale.com

